

CMMB's Board of Directors

Amy Anderson, President

Richard Dalsemer,
1st Vice President

Janet Brennan,
2nd Vice President

Leon Garden,
Secretary

David Garnham,
Treasurer

Katherine Bucquet
Ann Flower
Lisa Hoivik
Ann Jory
Harriette Schofield
Gary Stotz

Staff

John Newkirk,
Executive Director

Chamber Music
Monterey Bay
PO Box 221458
Carmel, CA 93922

PH: 831.625.2212
FX: 831.625.3555

E-mail:
info@chambermusic
monterebay.org

Website:
www.chambermusic
monterebay.org

2010-2011 Season Announced!

Don't miss the world's top performing ensembles with an eclectic lineup of repertoire to thrill and soothe you, to take you to towering heights and darkest depths, to make you smile, weep, and laugh. This is what chamber music is all about!

Join us for opening night with the **Lark Chamber Artists**, Friday Oct. 22. String quartet, baritone and percussion, presenting "The World in

Music." Quoting Fanfare Magazine, The Lark Chamber Artists assure a "... savviness of programming and fabulous performance."

Manasse/Nakamatsu Duo, Saturday Nov. 20. Jon Nakamatsu returns to Carmel, this time with performing partner clarinetist Jon Manasse. Quoting the Cape Cod Times, "...Manasse and ... Nakamatsu dazzled the audience with their seamless, hand-in-glove

combination of technical wizardry, refined musicianship and the poetic level of their interpretations."

On Friday Feb. 4, the award-winning young **Jupiter String Quartet** will appear with wunderkind **pianist Ben Kim**. Of the Jupiter Quartet, the Austin American Statesman wrote: "Holy catgut, Batman! It had pedal-to-the-metal pacing, was

continued on page 2

Cypress String Quartet Performs New Work

The CSQ will perform a new commission on April 17, Kevin Puts' *Lento Assai*. When we formed 14 years ago, something we knew that we had in common was our curiosity about what inspires composers. It delighted us to find connections in the music: "Mendelssohn nearly quotes Beethoven in that passage!" Out of this delight, our Call & Response program was born. We would take two examples of the 'standard' repertoire, pair them as a "call," and then commission a new work

continued on page 2



Cypress String Quartet

CMMB's 2010/11 season starts on October 22, 2010, with the

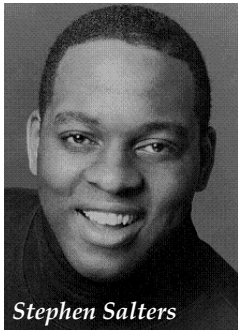
Lark Chamber Artists

Strings, Baritone & Percussion



"... savviness of programming and fabulous performance."

- *Fanfare Magazine*



Stephen Salters

Baritone Stephen Salters will appear with the Lark Chamber Artists in a program called "The World In Music." Also appearing will be percussionist Yousif Sheronick.

Yousif Sheronick



2010-2011 Season Announced! (continued from page 1)

absolutely together and was exquisitely in tune... amazingly mature expression." Quoting the Baltimore Sun on Ben Kim, "Sparks were flying from the keyboard ... with power, precision, and feeling for the daunting score."

The Amelia Piano Trio with Erhu player Wang

Guowei, Friday March 11, with a program entitled "East Meets West." Delight at the lovely sound of the Erhu, a two-stringed "Chinese violin," and the works written for this ensemble. *Strad Magazine* writes of the Amelia, "...its careful attention to balance, tonal beauty, and teamwork was exemplary."

The remarkable **Tokyo String Quartet** returns to Carmel on Friday Apr. 22. Quoting from the *Strad*, "Few ensembles exceed the high standards of the Tokyo Quartet... sumptuous, beautifully blended sonority ... with outstanding musical insight, unanimity and polish."

Cypress String Quartet Performs New Work (continued from page 1)

inspired by this relationship (the "response"). We could keep our art form current, while continuing to perform and study the music that we already loved. And audiences could watch the 'dialogue' of composers across the ages.

In 2009, to celebrate our 10th Anniversary of the program, we commissioned a piece from Kevin Puts, to be paired with Mendelssohn's first quartet, Op. 13, and Beethoven's last, Op. 135.

Kevin Puts responded with a one-movement work, titled *Lento Assai*. In Kevin's own words: "Like Mendelssohn, who drew deep inspiration from the late quartets of

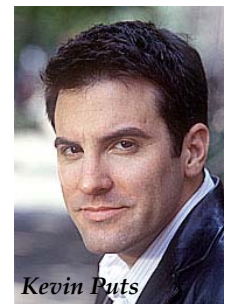
Beethoven and in some cases quoted them literally, I found a wellspring of ideas flowing from the slow movement of Beethoven's Op. 135. As in several of my recent works, my intention – by way of the meditative quality of much of this piece – was to create a kind of musical refuge for the listener, a temporary place of peace and tranquility."

We premiered *Lento Assai* at the Library of Congress in February of 2009. This seemed fitting to us, as the Library of Congress was where Barber's great 'Adagio' was premiered. When working on Kevin Puts' *Lento Assai*, our overall reaction was that this was the "Barber Adagio" of OUR time.

By Jennifer Kloetzel, CSQ

Credo's Success

CMMB's first commission, Kevin Puts' *Credo*, was included on the Miró Quartet's CD "The Miró Quartet Live" and was the #1-selling album on Naxosdirect.com for several weeks this spring.



Kevin Puts

CMMB's Website

CMMB is constantly updating and modernizing its website: news, reviews, concert "filmlets" by our award-winning videographer Douglas Mueller and more. Please visit us:

www.chambermusicmontereybay.org

CMMB Says Goodbye to a Cherished Friend

From the very beginning of Chamber Music Monterey Bay in 1966, Emile Norman was a faithful presence in the audience, enjoying the music and supporting the efforts of his friend Angie Machado to create a strong organization committed to bringing the best chamber ensembles to the Central Coast. For Emile, the worlds of art, music, and nature harmonized to create a good life. His art, with its swirling shapes and meticulous designs, shares with music and nature the quality of proportion and flow, and he was never happier than when he was working on a new sculpture—or listening to a live performance of great music.

Emile was born in 1918 and grew up on his parents' ranch in San Gabriel, California. He began selling his work at New York galleries in the 1940s, but always knew that California was home. In 1946, he moved with his partner Brooks Clement to Big Sur, where they built a beautiful home that still today displays Emile's spirit and unique artistry.

In 2003, Emile created a Charitable Trust that would ensure his legacy and support the arts in our community. The Trust's first event, in

2005, was a concert benefiting Chamber Music Monterey Bay, featuring the up-and-coming Calder String Quartet in a memorable performance at Emile's home. Since then The Emile Norman Charitable Trust has held numerous fundraisers in Emile's home and has made several gifts to CMMB in support of its concerts and programs.

Emile never missed a concert, despite the long drive to Carmel from his mountaintop home. In his opinion, recorded music had its place, but nothing could ever compare to the pleasure and thrill of live music. Emile died peacefully last September at the age of 91. CMMB will always remember and be grateful to Emile Norman, whose love of art, music and natural beauty inspires us all. Goodbye, dear friend.

By Kevin Smith
Photo by Jeff Mallory



For more about Emile, please visit www.emilenorman.com. His work is on display at the Carmel Art Association, www.carmelart.org

A John Adams String Quartet is Born

In August 2008, I received four beautifully bound parts and a score: a brand new string quartet by John Adams, written for the St. Lawrence String Quartet. It had only been nine months since John had decided to write a quartet for us, after he had attended one of our Stanford Lively Arts quartet performances on which we had played his "John's Book of Alleged Dances" and the Op. 132 String Quartet of Beethoven. Back stage after the concert he was filled with praise for our performance of 132, and he enthusiastically asked us, "Can I write a string quartet for you all?" Within seconds we replied with a resounding "YES," and the road to our new Adams quartet was paved. In seemingly no time three commissioners were in place – the Juilliard School, Stanford Lively Arts, and the Banff Centre – and the date of the premiere at Juilliard was set – January 29, 2009.

Our practicing and rehearsing began in earnest within days of receiving the parts. Now the pressure was on us to learn the work and make music of John's innovative, creative, and often complex ideas. A date was set for our first "workshop" session of the piece with John, and we looked forward to that day with child-like excitement mixed with a bit of fear. What if he hated what we were doing with the piece?

Suppose he decided we weren't the right group for it? Or maybe he wouldn't like the piece after all, and simply cancel the whole adventure.

We played the opening, and a huge grin appeared on his face, his eyes lit up, and he began swaying and nearly dancing at hearing the piece up close, played by live humans. He liked the piece! He didn't hate what we were doing with it! What followed in that meeting was an inspired examination of various tone color, phrasing, and articulation options. Our subsequent collaborative sessions with John have resulted in subtle changes throughout the quartet. I'm sure this task is a never ending one, much in the same way we never "finish" interpreting and shaping a Haydn or Beethoven quartet.

Our John Adams experience has been wonderfully unique, but shares similarities with the productive relationships we've had with dozens of composers over the years. It's easy to look at composers as artists isolated in their creative work, but in fact they're all very human and, in most cases, incredibly accessible. The art of interactive work between composer and performer is an integral part of the life of a serious musician, and I look forward to many more such opportunities throughout my career.

By Christopher Costanza of the St. Lawrence String Quartet



**CHAMBER MUSIC
MONTEREY BAY**

**2010/11 Concert Series
Sunset Center, Carmel
8 PM**

Lark Chamber Artists
Friday • October 22, 2010

Manasse/Nakamatsu Duo
Saturday • November 20, 2010

**Jupiter String Quartet
with Ben Kim, Piano**
Friday • February 4, 2011

**Amelia Piano Trio with
Wang Guowei, Erhu**
Friday • March 11, 2011

Tokyo String Quartet
Friday • April 22, 2011



*Wang Guowei
playing his erhu*

Thanks to Chamber Music Monterey Bay Donors

As the Great Recession grinds on, Chamber Music Monterey Bay is especially appreciative of monetary support, whether for current expenses or through planned gifts for the future. Though we have successfully reduced our expenses, these remain difficult times. We are financially strong and steadfast in our commitment to provide a world class concert series and excellent community education programs. Thanks to all who have made a donation since September 15, 2009:

- Andrew & Elena Allison
- Amy Anderson & George Somero
- Brad & Judy Anderson
- Janet Brennan
- Paul Brocchini & Mark Ryan
- Burnett Family Fund
- Mr. & Mrs. Fred Buskirk
- Marsha & Richard Cain
- Carmel Valley Manor
- Dr. Lawrence Crapo & Desirée Gillingham
- Mr. & Mrs. Victor Critchlow

- Richard & Betty Dalsemer
- Helga Danos
- Joanne DePhillips
- Karina Dmitri
- Darryl & Jean Donnelly
- William & Nancy Doolittle
- Deacon Eakins & Priscilla Rose
- Miriam W. Edwards
- Anna G. Elkington
- David & Lois Epel
- Christopher Fitz
- Richard M. Flower
- Mary Anne Garner
- David & Carla Garnham
- Beverly L. Hamilton
- Patricia & Harry Handler
- Lyle & Elizabeth Hoag
- Joan Cobb Hopkins
- Mr. & Mrs. Tony Horning
- Bill & Anita Kaplan
- Benjamin Kelley & Kristi Heath
- Dr. Melvin & Mildred Kline
- Anne Reese Kmetovic
- Louann Lampa
- Drs. Lovell & Libby Langstroth
- Fran & Norman Leve
- Scott & Judy MacClelland
- Mary Ann Matthews
- in Memory of Nancy Morrow

- Margaret & Richard Mayer
- Judy Midgley
- Peter & Carol Mollman
- J. Hilda Navarez
- Mr. & Mrs. Adolph Nicolai
- Emile Norman Charitable Trust
- Jaci Pappas
- Carl Pohlhammer
- Mr. & Mrs. Jim Price
- Jane & Tim Sanders
- Harriette & Dick Schofield
- Lilli Selvig
- Whitney & Clasina Shane
- Pamela Smith
- William & Marie Stanley
- Nicholas Sturch
- Stan & Rita Summers
- Judge & Mrs. Donald A. Thomas
- "B" Tomlinson
- Sam & Joan Trust
- John & Priscilla Walton
- Stuart & Paula Walzer
- Welton Family Foundation
- Dr. Darnell M. Whitt II
- Judy Williamson
- Kai E. Woehler
- Mr. & Mrs. Cyril Yansouni
- Margaret Young
- Joan & Larry Zaslow
- Leland & Marian Zeidler

What's an ERHU?

The **erhu** (Chinese: 胡; pinyin: *èrhú*), also called **nanhu** (南胡, "southern fiddle"), and sometimes known in the West as the "Chinese violin" or "Chinese two-string fiddle," is a two-stringed bowed musical instrument, used as a solo instrument as well as in small ensembles and large orchestras. It is the most

popular instrument in the huqin family of Chinese bowed string instruments, together with the zhonghu, gaohu, banhu, jinghu, sihu, and numerous others.

See and hear Wang Guowei play his erhu with the Amelia Piano Trio on Friday, March 11, 2011 as part of CMMB's dynamic 2010-11 season.

